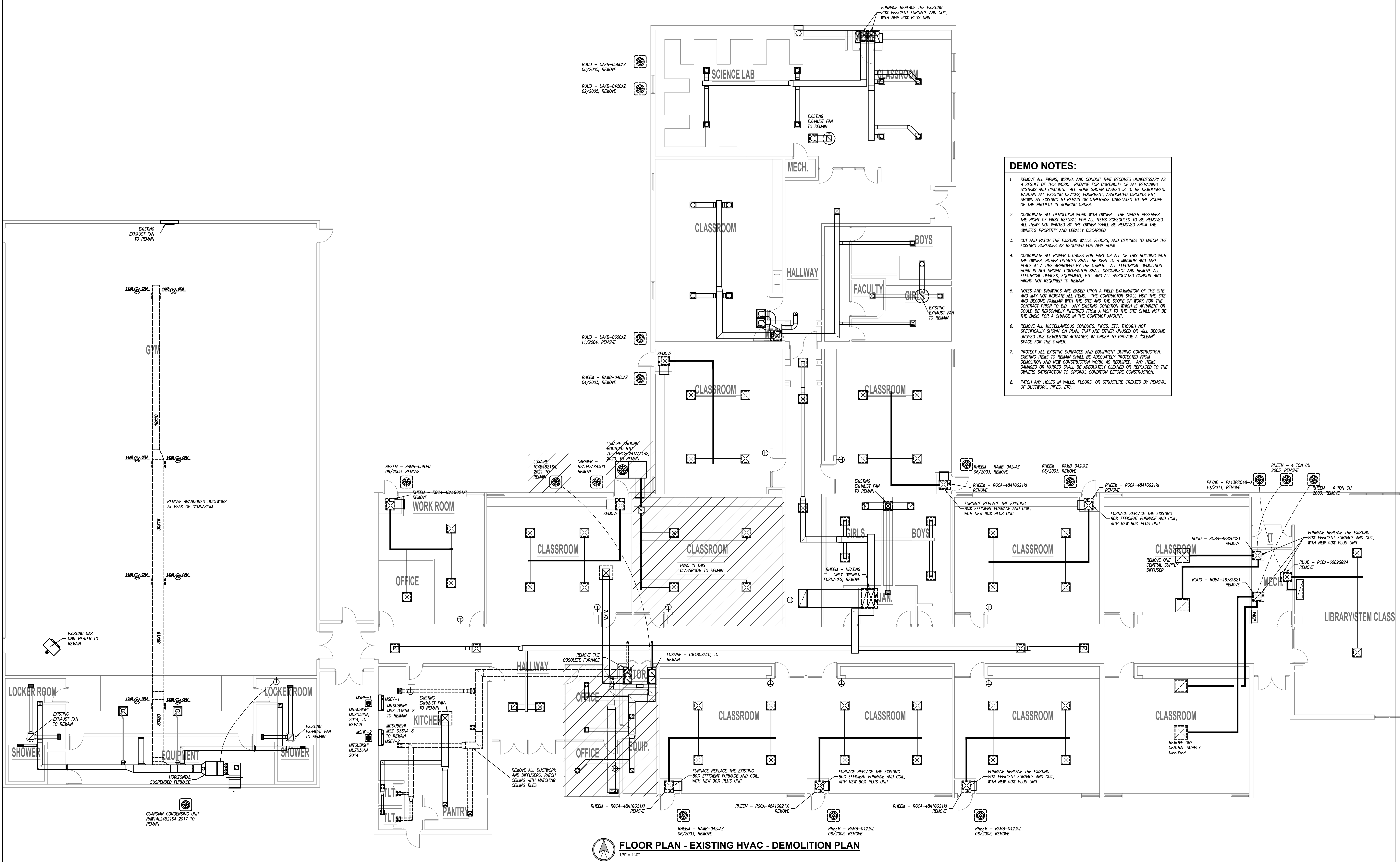


PEARSON KENT MCKINLEY RAAF ENGINEERS LLC
2933 SW WOODSIDE DR., STE 104 TOPEKA, KS 66614
785.273.2447 WWW.PKMRNG.COM

USD 506 LABETTE CO SCHOOLS
HVAC UPGRADES

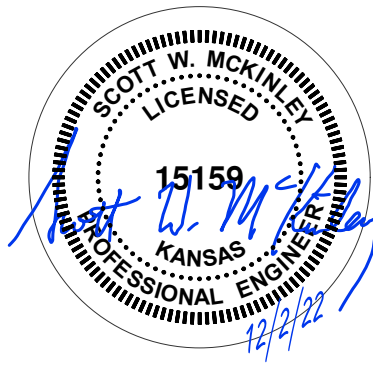
EDNA GRADE SCHOOL
220 MYRTLE ST.
EDNA, KS 67342

ISSUED FOR:		
DESCRIPTION	DATE	
1		
2		
3		
© PEARSON KENT MCKINLEY RAAF ENGINEERS, LLC		
DRAWN BY:	EJT	
CHECKED BY:	SWM	
SHEET TITLE:		
HVAC DEMO PLAN		
DATE:	12/2/22	PKMR PROJECT: 22.175
SHEET NUMBER:		M1



FLOOR PLAN - EXISTING HVAC - DEMOLITION PLAN
1/8" = 1'-0"

EDNA GRADE SCHOOL



PEARSON KENT MCKINLEY RAAF ENGINEERS LLC
2933 SW WOODSIDE DR., STE 104 TOPEKA, KS 66614
785.273.2447 WWW.PKMRENG.COM

USD 506 LABETTE CO SCHOOLS
HVAC UPGRADES

EDNA GRADE SCHOOL
220 MYRTLE ST.
EDNA, KS 67342

EDNA GRADE SCHOOL
OWNER WILL PURCHASE THIS EQUIPMENT, CONTRACTOR TO RECEIVE AND INSTALL EQUIPMENT

ROOF TOP UNIT SCHEDULE - THREE PHASE ELECTRIC WITH GAS HEAT

PLAN MARK	MANUFACTURER	MODEL NUMBER	SIZE	REFRIGERANT	MINIMUM EFFICIENCY	AIRFLOW	COMPRESSORS	COOLING CAPACITY	CFM	EXTERNAL STATIC	OA CFM	HEATING CAPACITY	ELECTRICAL	WEIGHT	FILTER	NOTES
RTU-1	LUXARE	2D-04W0702	4 TON	R-410A	14 SEER	DOWN OR HORIZONTAL	(1) SCROLL	48,000 BTUH	1,600	0.7"	180	75 MBH	208 V, 3 PH, 30 AMP	800 LBS	MERV 13	1,2,3
RTU-2	LUXARE	2D-09H1002	5 TON	R-410A	14 SEER	DOWN OR HORIZONTAL	(1) SCROLL	60,100 BTUH	2,000	1.0"	200	100 MBH	208 V, 3 PH, 35 AMP	800 LBS	MERV 13	1,2,3

- NOTES LEGEND
1. REFER TO PLANS FOR QUANTITIES - PROVIDE ROOF ADAPTER CURB, DISCONNECT SWITCH, HAL GUARDS, HOT GAS HUMIDITY CONTROL, AND ECONOMIZER
 2. PROVIDE WALL MOUNTED 7-DAY PROGRAMMABLE THERMOSTAT
 3. PROVIDE INTERNAL VIBRATION ISOLATION FOR THE RTU FAN AND COMPRESSORS

OWNER WILL PURCHASE THIS EQUIPMENT, CONTRACTOR TO RECEIVE AND INSTALL EQUIPMENT

FURNACE SCHEDULE

PLAN MARK	MANUFACTURER	MODEL NUMBER	CABINET WIDTH	TOTAL CFM	OUTDOOR AIR CFM	STATIC PRESSURE	MOTOR HP/H EFF.	HEAT INPUT BTUH	HEAT OUTPUT BTUH	FLUE OUTLET	COMBUSTION AIR INLET	EVAPORATOR	COOLING CAPACITY	ENTERING AIR DRYBWT	LEAVING AIR DRYBWT	ELECTRICAL	FILTER	NOTES
F-1	LUXARE	11R0608012UH1	18"	1200	140	0.5"	1/2 HP/ECM	80	57	2"	2"	3 TON	3.0 TON	78/85	57/55	120 V, 1 PH.	MERV 13	1
F-2	LUXARE	11R0608012UH1	18"	1200	140	0.5"	1/2 HP/ECM	80	57	2"	2"	3 TON	3.0 TON	78/85	57/55	120 V, 1 PH.	MERV 13	1
F-3	LUXARE	11R0608012UH1	18"	1200	140	0.5"	1/2 HP/ECM	80	57	2"	2"	3 TON	3.0 TON	78/85	57/55	120 V, 1 PH.	MERV 13	1
F-4	LUXARE	11R0608012UH1	18"	1200	140	0.5"	1/2 HP/ECM	80	57	2"	2"	3 TON	3.0 TON	78/85	57/55	120 V, 1 PH.	MERV 13	1
F-5	LUXARE	11R0608012UH1	18"	1200	140	0.5"	1/2 HP/ECM	80	57	2"	2"	3 TON	3.0 TON	78/85	57/55	120 V, 1 PH.	MERV 13	1
F-6	LUXARE	11R0608012UH1	18"	1200	140	0.5"	1/2 HP/ECM	80	57	2"	2"	3 TON	3.0 TON	78/85	57/55	120 V, 1 PH.	MERV 13	1
F-7	LUXARE	11R0608012UH1	18"	1200	140	0.5"	1/2 HP/ECM	80	57	2"	2"	3 TON	3.0 TON	78/85	57/55	120 V, 1 PH.	MERV 13	1
F-8	LUXARE	11R0608012UH1	18"	1200	140	0.5"	1/2 HP/ECM	80	57	2"	2"	3 TON	3.0 TON	78/85	57/55	120 V, 1 PH.	MERV 13	1
F-9	LUXARE	11R0608012UH1	18"	1200	140	0.5"	1/2 HP/ECM	80	57	2"	2"	3 TON	3.0 TON	78/85	57/55	120 V, 1 PH.	MERV 13	1
F-10	LUXARE	11R0608012UH1	18"	1200	140	0.5"	1/2 HP/ECM	80	57	2"	2"	3 TON	3.0 TON	78/85	57/55	120 V, 1 PH.	MERV 13	1
F-11	LUXARE	11R0608012UH1	18"	1200	140	0.5"	1/2 HP/ECM	80	57	2"	2"	3 TON	3.0 TON	78/85	57/55	120 V, 1 PH.	MERV 13	1
F-12	LUXARE	11R0608012UH1	18"	1200	140	0.5"	1/2 HP/ECM	80	57	2"	2"	3 TON	3.0 TON	78/85	57/55	120 V, 1 PH.	MERV 13	1
F-13	LUXARE	11R0608012UH1	18"	1200	140	0.5"	1/2 HP/ECM	80	57	2"	2"	3 TON	3.0 TON	78/85	57/55	120 V, 1 PH.	MERV 13	1
F-14	LUXARE	11R0608012UH1	18"	1200	140	0.5"	1/2 HP/ECM	80	57	2"	2"	3 TON	3.0 TON	78/85	57/55	120 V, 1 PH.	MERV 13	1

- NOTES LEGEND
1. PROVIDE 7-DAY PROGRAMMABLE THERMOSTAT

OWNER WILL PURCHASE THIS EQUIPMENT, CONTRACTOR TO RECEIVE AND INSTALL EQUIPMENT

CONDENSING UNIT SCHEDULE

PLAN MARK	MANUFACTURER	MODEL NUMBER	NOMINAL SIZE	TOTAL MBH	AMBIENT	SUCTION	LIQUID	COMPRESSORS	ELECTRICAL	MOP AMP	MIN CIRCUIT AMPS	DISCONNECT	NOTES
CU-1	LUXARE	TCO 3603	3 TONS	36	100	3/4"	3/8"	1	208/240V, 3PH	20	15	YES	1,2,3
CU-2	LUXARE	TCO 3603	3 TONS	36	100	3/4"	3/8"	1	208/240V, 3PH	20	15	YES	1,2,3
CU-3	LUXARE	TCO 3603	3 TONS	36	100	3/4"	3/8"	1	208/240V, 3PH	20	15	YES	1,2,3
CU-4	LUXARE	TCO 3603	3 TONS	36	100	3/4"	3/8"	1	208/240V, 3PH	20	15	YES	1,2,3
CU-5	LUXARE	TCO 3603	3 TONS	36	100	3/4"	3/8"	1	208/240V, 3PH	20	15	YES	1,2,3
CU-6	LUXARE	TCO 3603	3 TONS	36	100	3/4"	3/8"	1	208/240V, 3PH	20	15	YES	1,2,3
CU-7	LUXARE	TCO 3603	3 TONS	36	100	3/4"	3/8"	1	208/240V, 3PH	20	15	YES	1,2,3
CU-8	LUXARE	TCO 3603	3 TONS	36	100	3/4"	3/8"	1	208/240V, 3PH	20	15	YES	1,2,3
CU-9	LUXARE	TCO 3603	3 TONS	36	100	3/4"	3/8"	1	208/240V, 3PH	20	15	YES	1,2,3
CU-10	LUXARE	TCO 3603	3 TONS	36	100	3/4"	3/8"	1	208/240V, 3PH	20	15	YES	1,2,3
CU-11	LUXARE	TCO 3603	3 TONS	36	100	3/4"	3/8"	1	208/240V, 3PH	20	15	YES	1,2,3
CU-12	LUXARE	TCO 3603	3 TONS	36	100	3/4"	3/8"	1	208/240V, 3PH	20	15	YES	1,2,3
CU-13	LUXARE	TCO 3603	3 TONS	36	100	3/4"	3/8"	1	208/240V, 3PH	20	15	YES	1,2,3
CU-14	LUXARE	TCO 3603	3 TONS	36	100	3/4"	3/8"	1	208/240V, 3PH	20	15	YES	1,2,3

- NOTES LEGEND
1. PROVIDE TXV VALVE, SERVICE VALVES, AND REFRIGERANT ACCUMULATOR AT SUCTION LINE
 2. PROVIDE COIL HAL GUARDS
 3. VERIFY EXACT REFRIGERANT LINE SIZES WITH MANUFACTURER

OWNER WILL PURCHASE THIS EQUIPMENT, CONTRACTOR TO RECEIVE AND INSTALL EQUIPMENT

MINI-SPLIT DUCTLESS EVAPORATOR/HEAT PUMP SCHEDULE

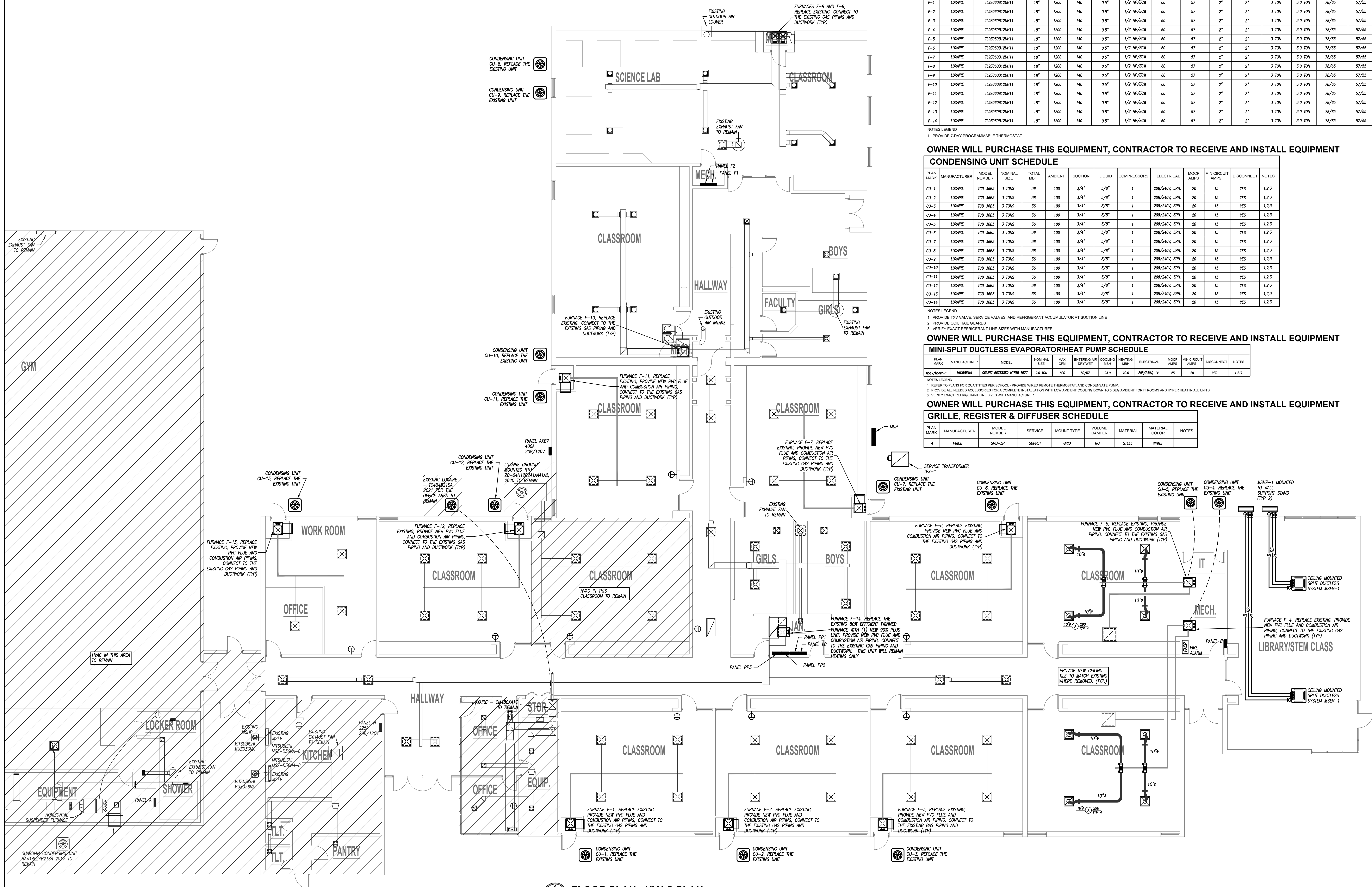
PLAN MARK	MANUFACTURER	MODEL	NOMINAL SIZE	MAX CFM	ENTERING AIR DRYBWT	COOLING MBH	HEATING MBH	ELECTRICAL	MOP AMP	MIN CIRCUIT AMPS	DISCONNECT	NOTES
MSEV-MSP-1	MITSUBISHI	CEILING RECESSED HYPER HEAT	2.0 TON	800	80/87	24.0	25.0	208/240V, 1P	25	20	YES	1,2,3

- NOTES LEGEND
1. REFER TO PLANS FOR QUANTITIES PER SCHOOL - PROVIDE WIRED REMOTE THERMOSTAT AND CONDENSATE PUMP
 2. PROVIDE ALL NEEDED ACCESSORIES FOR A COMPLETE INSTALLATION WITH LOW AMBIENT COOLING DOWN TO 0 DEG AMBIENT FOR IT ROOMS AND HYPER HEAT IN ALL ZONES
 3. VERIFY EXACT REFRIGERANT LINE SIZES WITH MANUFACTURER

OWNER WILL PURCHASE THIS EQUIPMENT, CONTRACTOR TO RECEIVE AND INSTALL EQUIPMENT

GRILLE, REGISTER & DIFFUSER SCHEDULE

PLAN MARK	MANUFACTURER	MODEL NUMBER	SERVICE	MOUNT TYPE	VOLUME DAMPER	MATERIAL	COLOR	NOTES
A	PRICE	SMD-3P	SUPPLY	GRID	NO	STEEL	WHITE	

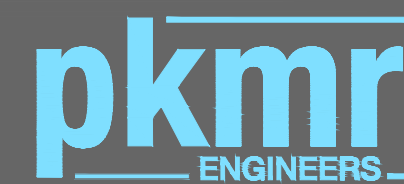
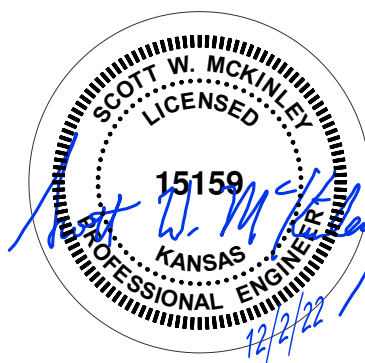


FLOOR PLAN - HVAC PLAN
1/8" = 1'-0"

EDNA GRADE SCHOOL

ISSUED FOR:		DATE
1	DESCRIPTION	
2		
3		
© PEARSON KENT MCKINLEY RAAF ENGINEERS, LLC		
DRAWN BY:		EJT
CHECKED BY:		SWM
SHEET TITLE:		
HVAC PLAN		
DATE:	PKMR PROJECT:	22.175
12/2/22		
SHEET NUMBER:		

M2



PEARSON KENT MCKINLEY RAAF ENGINEERS LLC
2933 SW WOODSIDE DR., STE 104 TOPEKA, KS 66614
785.273.2447 WWW.PKMRENG.COM

USD 506 LABETTE CO SCHOOLS HVAC UPGRADES

EDNA GRADE SCHOOL
220 MYRTLE ST.
EDNA, KS 67342



ELECTRIC NOTES:
1. FIELD VERIFY THE EXACT ELECTRICAL REQUIREMENTS FOR ALL EQUIPMENT PROVIDED BY OTHERS.
2. EXISTING CONDUIT AND CONDUCTORS THAT ARE FOUND TO BE OF SUFFICIENT AMPACITY AND PHASING MAY BE REUSED.

ISSUED FOR:		
DESCRIPTION	DATE	
1		
2		
3		
© PEARSON KENT MCKINLEY RAAF ENGINEERS, LLC		
DRAWN BY:	EJT	
CHECKED BY:	SWM	
SHEET TITLE:		
POWER PLAN		
DATE:	12/2/22	PKMR PROJECT: 22.175
SHEET NUMBER:		

E1

EDNA GRADE SCHOOL